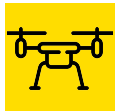


Volume and Productivity Tracking Made Easy

DirtMate connects machines with Propeller software and drone surveys for daily volume and production tracking

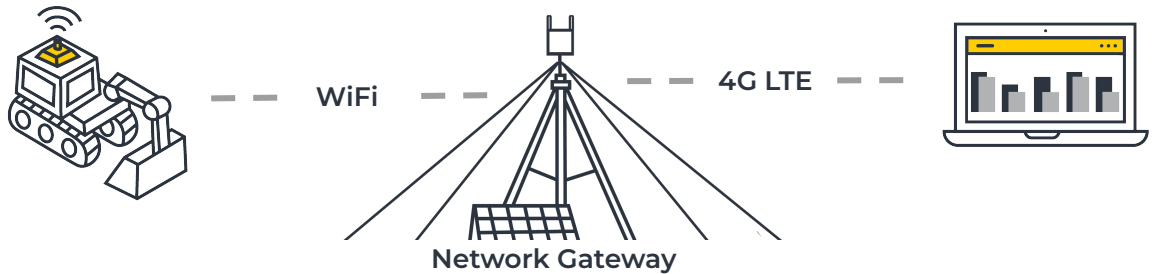
How does it work?



Mounted on the cab and equipped with GPS, DirtMate continuously provides machine location and elevation. DirtMate surveys and captures the ground beneath tires or tracks to automatically generate key production data.



DirtMates stream data live to Propeller with WiFi and 4G connectivity.



In Propeller, users can measure material moved, count cycles and loads, and track machine utilization.



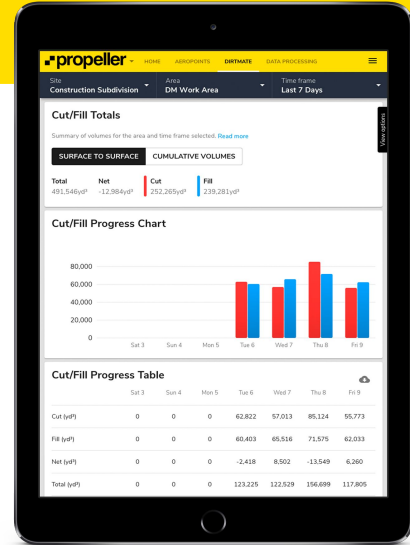
propeller dirtmate Features and Specifications



Quantities

DirtMates measure the amount of material moved by tracking changes in the surface of a site. Every half hour a new surface is created from your DirtMate data and your latest drone survey data..

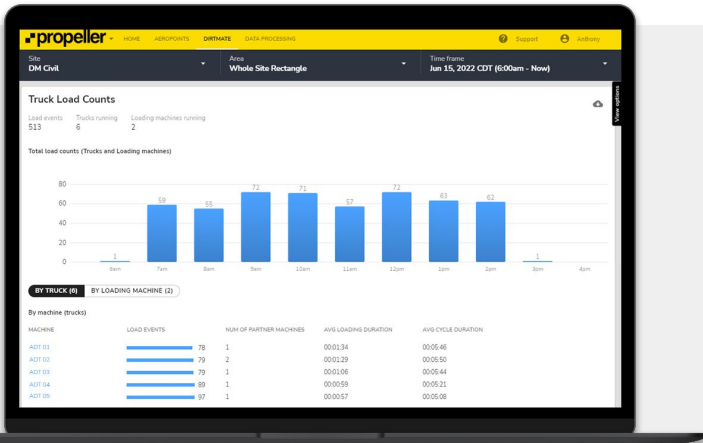
- Make measurements in Propeller with the latest surface data
- Track progress over the week or day on your DirtMate Dashboard
- Compare current site to project design surfaces



Cycle Counts

With DirtMate, Propeller analyzes machine routes for haul duration, length, and quantity.

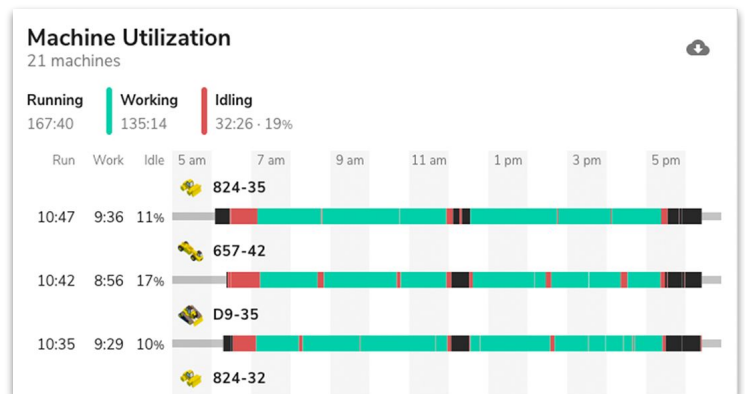
- **Truck cycle count:** Counts the number of times a truck visits an excavator and tracks loading times
- **Scraper cycle count:** Automatically identifies and counts scraper routes
- **Pin drop:** Automatically counts the number of times a machine visits a marked location on site



Machine Utilization

DirtMate's inertial measurement unit (IMU) detects *off*, *working*, and *idle* times from machine vibrations.

Get visibility into your fleet and quickly identify extended machine idle or down time. Quickly spot issues in machine work patterns and start and stop times to get maximum productivity from your fleet.



Specifications

	DirtMate	Network Gateway
GPS	DirtMate accuracy: 20 mm (0.05ft) ± 1ppm Surface accuracy 30 mm (0.1ft) - 90 mm (0.3ft) ± 1ppm	-
Power	Source: solar powered 3.6 V or power cable 12 V - 24 V DC 3 working days of battery life	Source: solar, 12 V - 24 V DC, 120 V - 240 VAC wall socket
Data	24-hour storage WiFi network: 2.4GHz 802.11 b/g/n 150 Mb/s	WiFi and 4G LTE WiFi range 0.5 miles (0.8km)

Base DirtMate

A stationary DirtMate acting as a base station provides RTK corrections to all other DirtMates on site for survey grade accuracy.